

FED. ROAD DIST. NO.	STATE	PROJECT NO.	FISCAL YEAR	SHEET NO.	TOTAL SHEETS
6	ARK.		1944	1	10
STATE JOB NO. 6320			1944	1	10

STATE OF ARKANSAS
STATE HIGHWAY COMMISSION

INDEX OF SHEETS

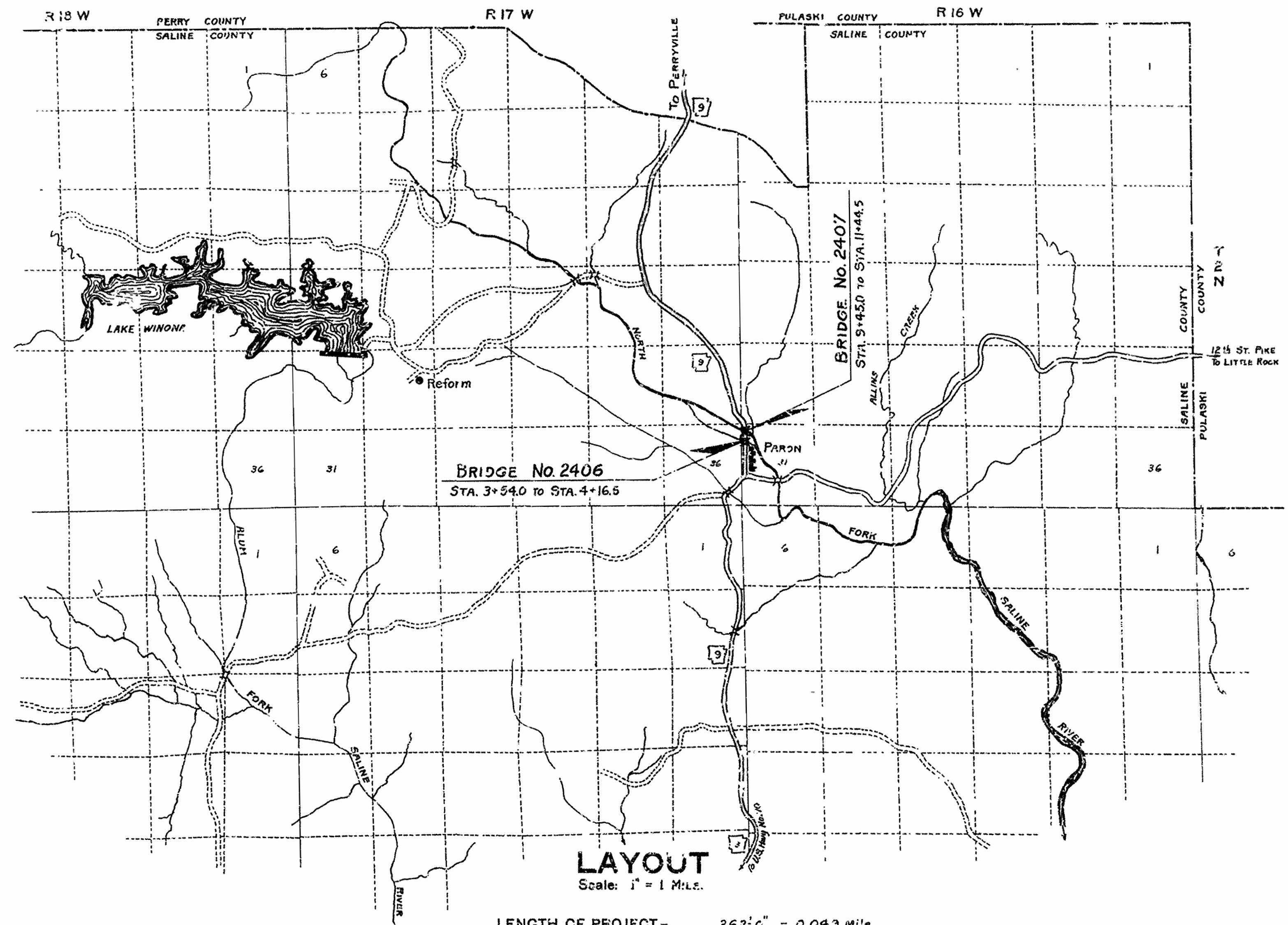
SHEET No.	DRAWING No.	TITLE OF SHEETS
1	6549	TITLE SHEET FOR JOB NO. 6320
2	6550	SUMMARY OF QUANTITIES
3	6551	PLAN AND PROFILE OF APPROACHES
4	6552	LAYOUT OF BRIDGE OVER N. FORK OF SALINE RIVER RELIEF
5	6553	LAYOUT OF BRIDGE OVER NORTH FORK OF SALINE RIVER
6	6554	DETAILS OF ABUTMENTS
7	6555	DETAILS OF PIERS
8	6556	DETAILS OF TWO SPAN CONTINUOUS I-BEAM UNITS
9	1888	EMBANKMENT CONSTRUCTION AT BR. ENDS AND BACKFILL FOR STRUCTURES
10	1891	BASIS FOR COMPUTING EXCAVATIONS FOR STRUCTURES.

PLAN OF PROPOSED BRIDGES
ON PARON - PERRYVILLE ROAD

SALINE COUNTY
ROUTE 9 SEC. 5
JOB NO 6320

QUANTITIES

ITEM NO.	ITEM	QUANTITY	UNIT
103	DRY EXCAVATION FOR STRUCTURES	96	CU YD.
103	WET EXCAVATION FOR STRUCTURES	374	CU YD.
103	SOLID ROCK EXCAVATION FOR STRUCTURES	70	CU YD.
S.P. & 802	CLASS 'A' CONCRETE FOR BRIDGES	246.3	CU YD.
S.P. & 802	CLASS 'B' CONCRETE FOR BRIDGES	144.4	CU YD.
S.P. & 805	REINFORCING STEEL	57,600	LB.
805	CONCRETE RAILING	552	LN. FT.
S.P. & 807	STRUCTURAL STEEL IN BEAM SPANS	6080	LB.
S.P. & 807	FABRICATION AND ERECTION OF STRUCTURAL STEEL I-BEAMS ON HAND	67,240	LB.
909	RIPRAP	54	CU YD.
S.P.	REMOVAL OF EXISTING BRIDGE STRUCTURES	100%	COMPLETE ITEM



LAYOUT
Scale: 1" = 1 MILE.

LENGTH OF PROJECT= 262'-0" = 0.049 Mile
LENGTH OF BRIDGES= 262'-0" = 0.049 Mile
LENGTH OF EMBANKMENT=
LENGTH OF JOB= 262'-0" = 0.049 Mile

SPECIFICATIONS - Arkansas State Highway Commission Standard Specifications for Road and Bridge Construction, adopted March 1, 1940

PAMPHLETS

- DIVISION I
- DIVISION II Parts 1, 3a, 8b, and 9
- DIVISION III
- DIVISION IV

SPECIAL PROVISIONS

No.	DESCRIPTION	No. OF SHEETS
	Required Special Provisions (App. 3-25-42)	14
	Equipment and Priority	1
	Wages of Labor	1
2-1	Revision of Article 2.11 (App. 2-8-41)	2
2-2	Equipment List Required	1
2-3	Time For Obtaining Proposal Forms	1
3-2	Award of Contract	1
4-1	Revision of Article 4.9	1
8-3	Employment Centers of Labor	1
9-5	Partial Payments	1
9-6	Common Carrier Rates	1
803-1	Revision of Article 803.21	1
807-3	Revision of Section 807	1
850-1	Engineers Field Office	1
953-1	Machine Mixing	1
	Fabrication and Erection of Structural Steel I-Beams on Hand	2
	Removal of Existing Bridge Structures	1

APPROVED [Signature] CHIEF ENGINEER - U. S. BUREAU OF PUBLIC ROADS

APPROVED [Signature] DISTRICT ENGINEER - U. S. BUREAU OF PUBLIC ROADS

APPROVED [Signature] CHIEF - U. S. BUREAU OF PUBLIC ROADS

APPROVED [Signature] CHAIRMAN - STATE HIGHWAY COMMISSION

APPROVED [Signature] STATE HIGHWAY ENGINEER

PRINCIPAL HIGHWAY ENGINEER (BRIDGE)

FED. ROAD DIST. NO.	STATE	PROJECT NO.	FISCAL YEAR	SHEET NO.	TOTAL SHEETS
6	ARK.				
STATE JOB NO. 6320			1944	2	10

SCHEDULE OF BRIDGE QUANTITIES

CODE NO. 924

ITEM NO.	103		103		S.P. & 802		S.P. & 802		S.P. & 803		805		S.P. & 807		S.P. & 807		909		S.P.	
	UNIT OF BRIDGE	UNIT	CU. YD.	CU. YD.	CU. YD.	CU. YD.	CU. YD.	LB.	LB.	LB.	LIN. FT.	LB.	LB.	LB.	LB.	CU. YD.	CU. YD.	COMPLETE ITEM	COMPLETE ITEM	
BRIDGE NO. 2406	ABUTMENT No. 1		55	66	10	39.62		3900		9	150				27					
	PIER No. 1			28	7	14.26		2470												
	ABUTMENT No. 2		14	66	9	39.62		3900		9	150									
	60'-6" TWO SPAN CONT. I-BEAM UNIT						34.00	6290		121	1370	15760								
	TOTALS FOR BRIDGE No. 2406		29	160	26	93.50	34.00	16560	139	1670	15760			27		25%				
BRIDGE NO. 2407	ABUTMENT No. 1		28	47	7	39.62		3900		9	150				27					
	PIER No. 1			25	7	14.71		2550												
	PIER No. 2			25	7	14.71		2550												
	PIER No. 3			20	7	14.71		2550												
	PIER No. 4			25	7	14.71		2550												
	PIER No. 5			25	6	14.71		2550												
	ABUTMENT No. 2		39	47	3	39.63		3900		9	150									
	65'-0" TWO SPAN CONT. I-BEAM UNIT						36.39	6790		130	1370	16940								
	67'-6" TWO SPAN CONT. I-BEAM UNIT						37.62	6990		135	1370	17600								
	65'-0" TWO SPAN CONT. I-BEAM UNIT						36.39	6790		130	1370	16940								
TOTALS FOR BRIDGE No. 2407		67	214	44	152.80	110.40	41120	413	4910	51980			27		75%					
TOTALS FOR JOB NO. 6320			96	374	70	246.30	144.40	57680	552	6080	67240			54		100%				

SUMMARY OF QUANTITIES
FOR BRIDGES OVER NORTH FORK OF SALINE RIVER
ON PARON - PERRYVILLE ROAD
SALINE COUNTY
ROUTE 9 SEC. 5

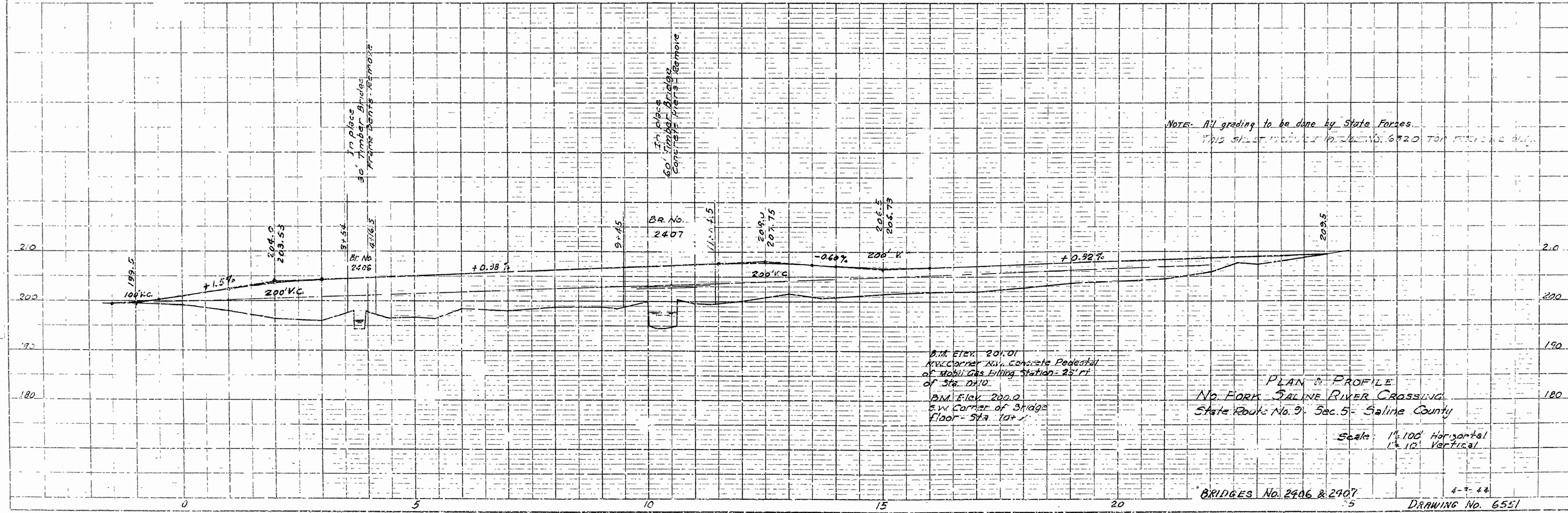
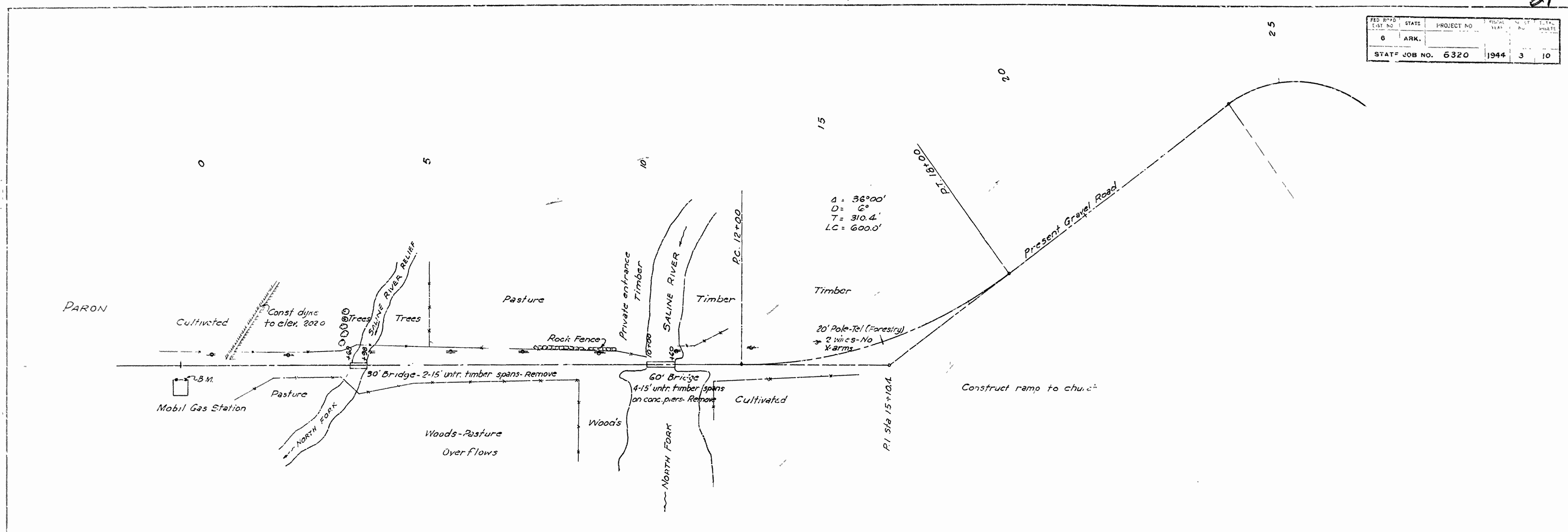
ARKANSAS STATE HIGHWAY COMMISSION
LITTLE ROCK, ARK.

Drawn By: W.C.H. Date: 6-2-44
 Checked By: W.C.H. Date: 6-3-44
 Approved By: _____ Date: _____

Scale: 1" = 100'

BRIDGE NO. 2406 & 2407 DRAWING NO. 6550

FED. PROJ. DIST. NO.	STATE	PROJECT NO.	SHEET NO.	TOTAL SHEETS
6	ARK.		3	10
STATE JOB NO. 6320		1944	3	10



B.M. Elev. 201.01
 NW Corner NW Concrete Pedestal
 of Mobil Gas Filling Station - SW of
 of Sta. 10+10
 B.M. Elev. 200.0
 SW Corner of Bridge
 Floor - Sta. 10+1

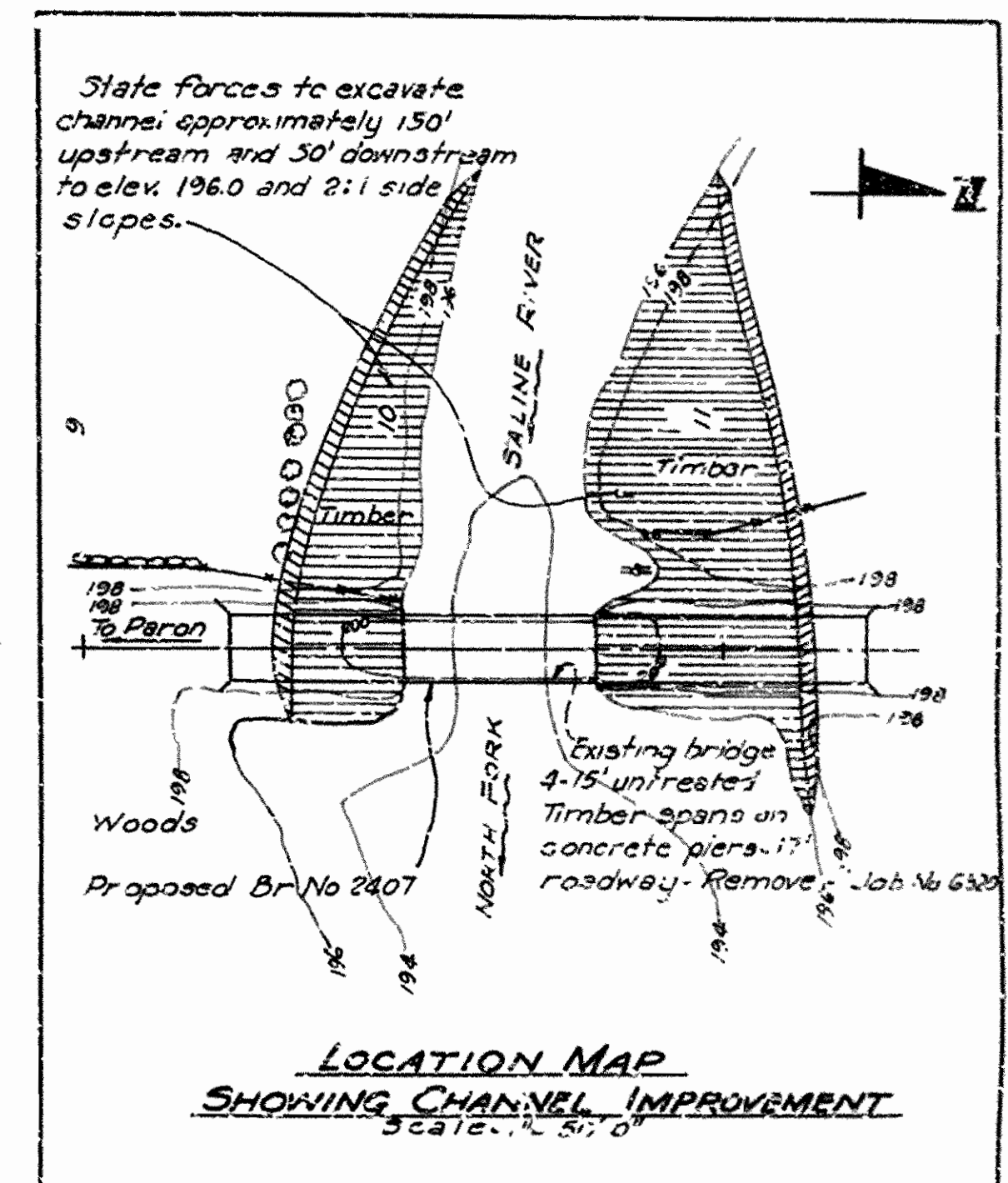
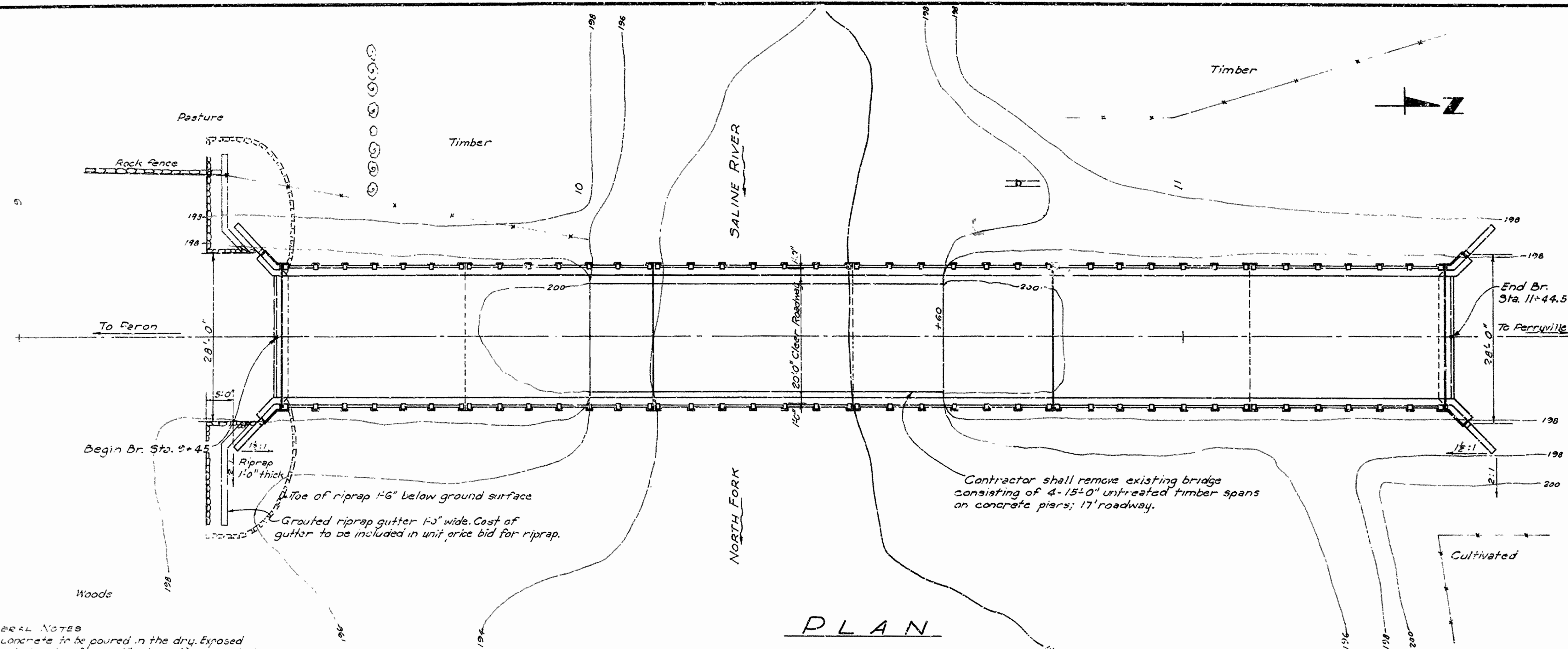
PLAN & PROFILE
 NO. FORK - SALINE RIVER CROSSING
 State Route No. 9, Sec. 5 - Saline County

Scale: 1" = 100' Horizontal
 1" = 10' Vertical

BRIDGES No. 2906 & 2907

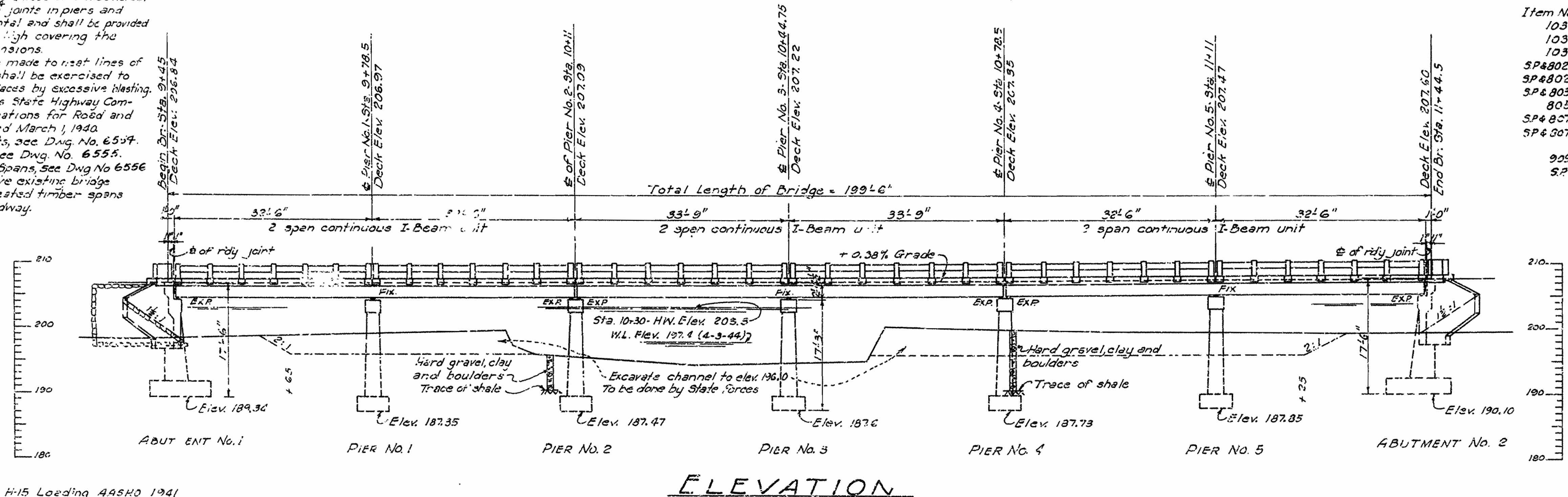
DRAWING No. 6551

FED. ROAD DIST. NO.	STATE	PROJECT NO.	FISCAL YEAR	SHEET NO.	TOTAL SHEETS
0	ARK.		1944	5	10
STATE JOB NO. 6320					



GENERAL NOTES
 All concrete to be poured in the dry. Exposed corners to be chamfered 1/4" unless otherwise noted. In general all construction joints in piers and abutments shall be horizontal and shall be provided with keys not less than 3" high covering the middle third of both dimensions.
 Rock excavation shall be made to rest lines of concrete footings. Care shall be exercised to avoid shattering of rock faces by excessive blasting.
 Specifications: Arkansas State Highway Commission Standard Specifications for Road and Bridge Construction, dated March 1, 1940.
 For Details of Abutments, see Div. No. 6549.
 For Details of Piers, see Div. No. 6555.
 For Details of I-Beam Spans, see Div. No. 6556.
 Contractor shall remove existing bridge consisting of 4-15' untreated timber spans on concrete piers; 17' roadway.

Item No.	Item	Quantity	Unit
103	Dry Excavation for Structures	67	Cu Yds
103	Wet Excavation for Structures	218	Cu Yds
103	Solid Rock Excavation for Structures	94	Cu Yds
SP4802	Class "A" Concrete for Bridges	152.8	Cu Yds
SP4802	Class "S" Concrete for Bridges	110.4	Cu Yds
SP4803	Reinforcing Steel	41,120	Lbs
805	Concrete Railing	413	Lin. Ft.
SP4807	Structural Steel in Beam Spans	4410	Lbs
SP4807	Fabrication and Erection of Structural Steel I-Beams on Hand	51480	Lbs
909	Riprap	27	Cu Yds
52	Removal of Existing Bridge Structures	75%	Comp. Item



Design Live Load: H-15 Loading AASHO 1941

Unit Stresses:
 Class "B" Concrete (n=10) 1000 lbs per sq. in.
 Reinforcing Steel 18,000 lbs per sq. in.
 Structural Steel 18,000 lbs per sq. in.

Maximum Foundation Pressures
 Abutments 2.5 tons/sq. ft.
 Piers 2.5 tons/sq. ft.

DRAINAGE AREA
 BR. Nos. 2406 & 2407 - 23 sq. miles - C-1.0

B.M. Elev. 201.0
 N.W. Corner of N.W. concrete pedestal of Mobil Filling Station
 25' right of Sta. 0+10

LAYOUT OF BRIDGE
 OVER NORTH FORK SALINE RIVER
 PARON-PERRYVILLE ROAD
 SALINE COUNTY
 ROUTE 2 SEC. 5

ARKANSAS STATE HIGHWAY COMMISSION
 LITTLE ROCK, ARK.

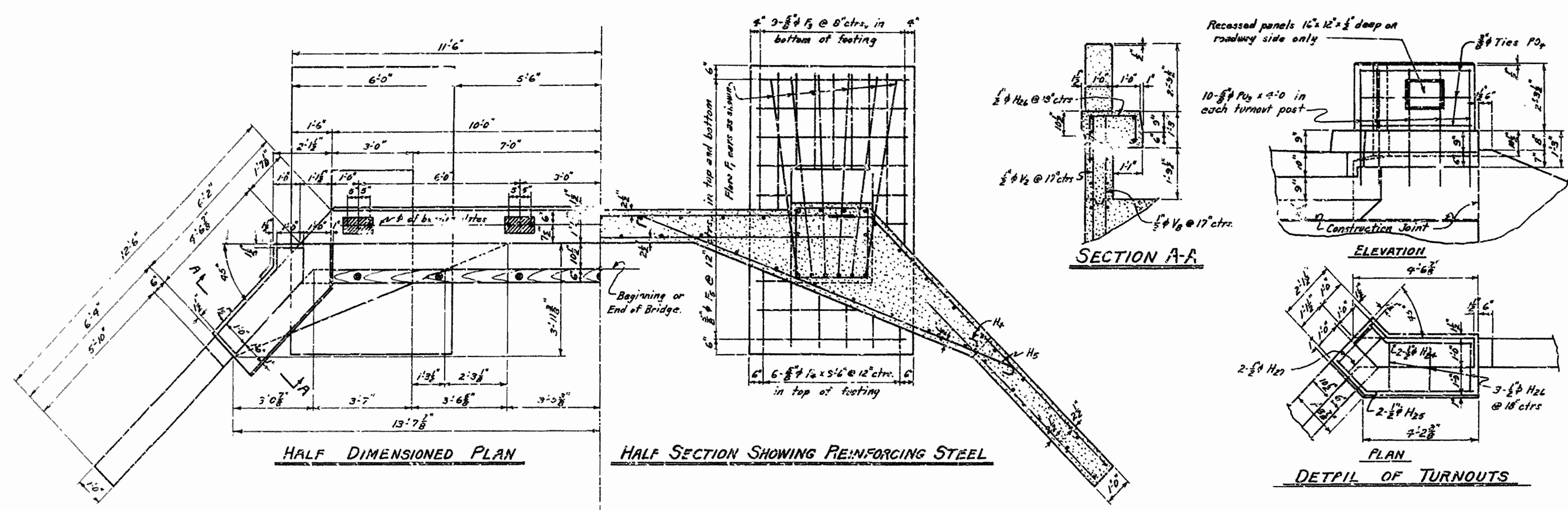
Drawn By: H.C. Date: 5-12-44
 Traced By: H.C. Date: 5-12-44
 Checked By: Date: _____

Scale: 1 in. = 10 ft.

BRIDGE NO. 2407 DRAWING NO. 6553

H.C. Sawyer
 PRINCIPAL HIGHWAY ENGINEER (E.C.E.E.)

FED. ROAD DIST. NO.	ST. NO.	PROJECT NO.	FISCAL YEAR	SHEET NO.	TOTAL SHEETS
0	ARK.		1944	6	10
STATE JOB NO. 6320					



SECTION A-A

ELEVATION

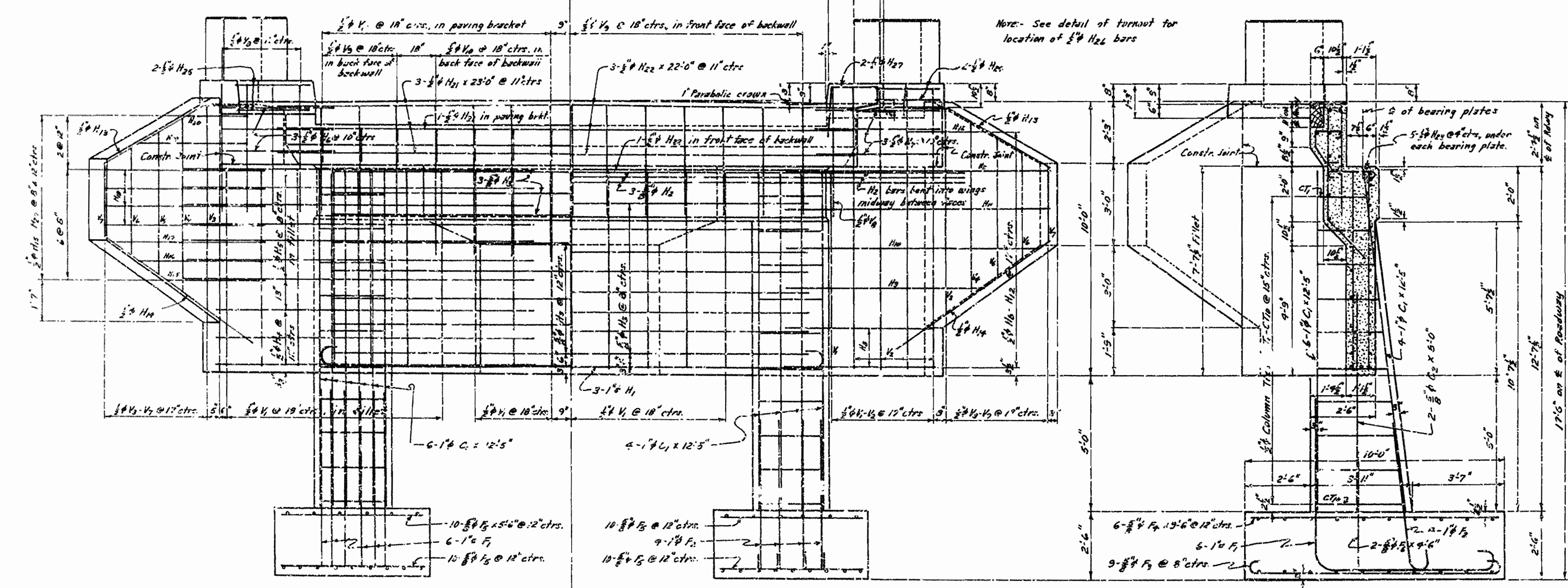
PLAN

DETAIL OF TURNOUTS

BAR LIST FOR EACH ABUTMENT

BENT BARS					STRAIGHT BARS				
MARK	SIZE	NO. REBAR	LENGTH	A	B	MARK	SIZE	NO. REBAR	LENGTH
F ₁	1 1/2"	12	13'-0"			C ₁	1 1/2"	20	12'-5"
F ₂	1 1/2"	8	6'-6"			C ₂	1 1/2"	4	6'-6"
H ₁	1 1/2"	3	21'-4"	19'-4"	0'-8"	F ₃	1 1/2"	12	3'-6"
F ₃	1 1/2"	10	10'-3"	9'-4"	0'-5"	F ₄	1 1/2"	70	5'-6"
H ₂	1 1/2"	20	2'-6"	1'-0"	0'-3"	H ₃	1 1/2"	16	18'-6"
H ₃	1 1/2"	6	19'-0"			H ₄	1 1/2"	2	5'-6"
H ₄	1 1/2"	6	19'-2"			H ₅	1 1/2"	4	3'-0"
H ₅	1 1/2"	14	15'-8"	14'-8"	0'-8"	H ₆	1 1/2"	2	5'-0"
H ₆	1 1/2"	6	6'-6"	5'-0"	1'-0"	H ₇	1 1/2"	2	8'-0"
H ₇	1 1/2"	6	6'-0"	4'-8"	1'-0"	H ₈	1 1/2"	6	6'-6"
H ₈	1 1/2"	4	7'-6"	5'-10"	1'-8"	H ₉	1 1/2"	2	6'-9"
H ₉	1 1/2"	2	10'-2"	8'-6"	1'-8"	H ₁₀	1 1/2"	2	4'-3"
H ₁₀	1 1/2"	2	13'-4"	11'-8"	1'-8"	H ₁₁	1 1/2"	4	23'-0"
H ₁₁	1 1/2"	4	15'-11"	12'-3"	1'-8"	H ₁₂	1 1/2"	4	22'-0"
H ₁₂	1 1/2"	4	2'-0"	3'-2"	0'-10"	V ₁	1 1/2"	31	7'-2"
H ₁₃	1 1/2"	4	5'-3"	3'-10"	1'-5"	V ₂	1 1/2"	8	10'-3"
H ₁₄	1 1/2"	4	8'-0"			V ₃	1 1/2"	4	9'-9"
H ₁₅	1 1/2"	6	5'-6"			V ₄	1 1/2"	4	6'-6"
H ₁₆	1 1/2"	4	5'-6"			V ₅	1 1/2"	4	5'-3"
H ₁₇	1 1/2"	4	5'-6"			V ₆	1 1/2"	4	4'-6"
H ₁₈	1 1/2"	4	5'-6"			V ₇	1 1/2"	4	2'-9"
H ₁₉	1 1/2"	8	6'-1"	4'-1"	2'-0"	V ₈	1 1/2"	10	4'-9"
V ₁	1 1/2"	14	3'-3"			V ₉	1 1/2"	19	3'-0"
CT ₁	1 1/2"	2	Varies	Varies		PO ₁	1 1/2"	20	4'-0"
CT ₂	1 1/2"	Each	10'-0"	2'-6"	2'-7 1/2"				
CT ₃	1 1/2"	Each	13'-0"	3'-6"					

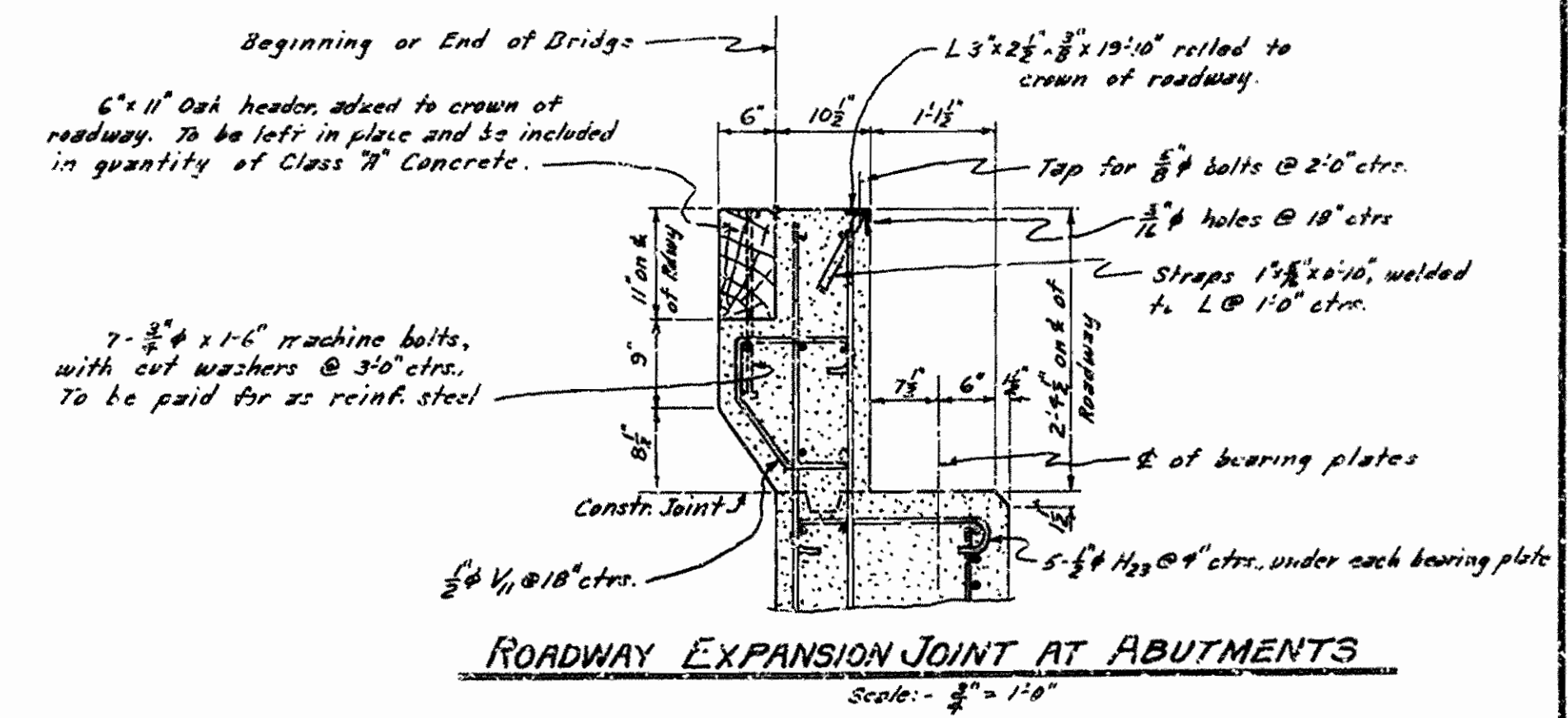
Note: Dimensions relating to reinforcing steel are to center of bars.



HALF REAR ELEVATION
Showing reinforcing steel in back face.

HALF FRONT ELEVATION
Showing reinforcing steel in front face.

SECTION ON E OF ROADWAY



ROADWAY EXPANSION JOINT AT ABUTMENTS
Scale: 1/4" = 1'-0"

GENERAL NOTES

All concrete to be class "A" and shall be poured in the dry. All exposed corners to be chamfered 1/4" unless otherwise shown.
 For Layout of Bridge No. 2406, see Drawing No. 6552.
 For Layout of Bridge No. 2407, see Drawing No. 6553.
 For details of Two Span Continuous T-Beam Units, see Drawing No. 6554.
 Foundation pressure is maximum at 2.5 tons per square foot.

QUANTITIES FOR EACH ABUTMENT

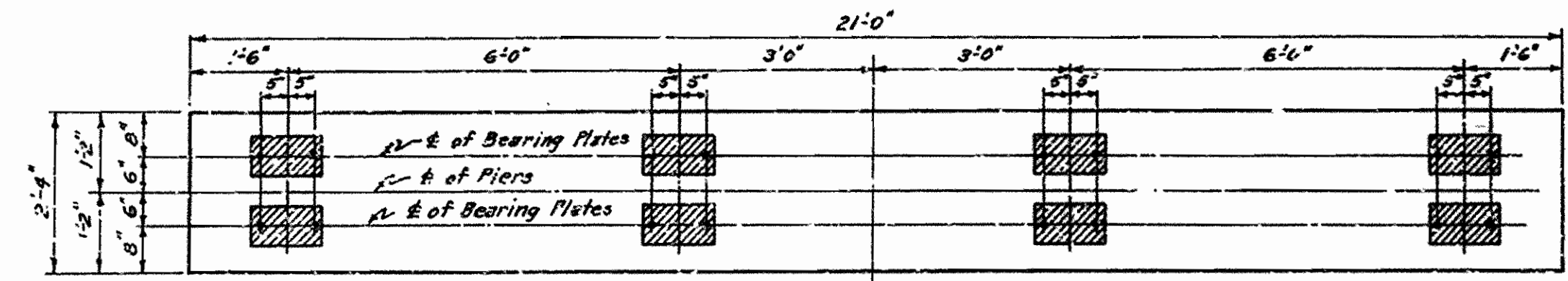
Class "A" Concrete	39.62 Cu.Yds.
Reinforcing Steel	3900 Lbs.
Structural Steel	150 Lbs.
Concrete Railing	9 Lin.Ft.

DETAILS OF ABUTMENTS NO.1&2
 BRIDGES OVER NORTH FORK OF
 SALINE RIVER AND RELIEF OPENING
 PARON-PERRYVILLE ROAD
 SALINE COUNTY
 ROUTE 9 SEC.5

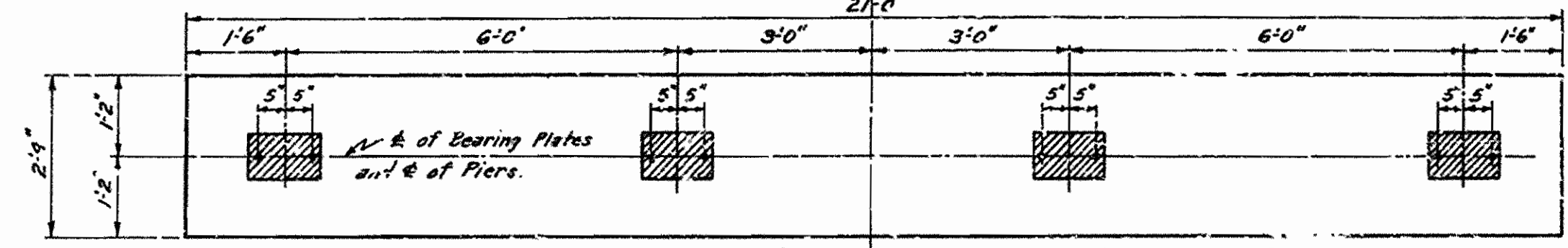
ARKANSAS STATE HIGHWAY COMMISSION
 LITTLE ROCK, ARK.
 Drawn By: W.C.H. Date: 5-15-44
 Traced By: W.C.H. Date: 5-29-44
 Checked By: _____ Date: _____
 BRIDGE NO. 2406 & 2407 DRAWING NO. 6554

W.C.H.
 PRINCIPAL HIGHWAY ENGINEER (BRIDGE)

FED. ROAD DIST. NO.	STATE	PROJECT NO.	FISCAL YEAR	SHEET NO.	TOTAL SHEETS
6	ARK.			7	10
STATE JOB No. 6320		1944			

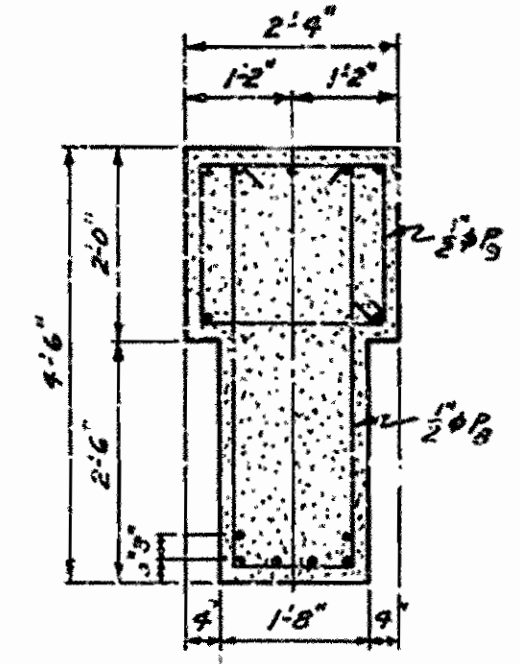


PLAN OF CAP FOR PIERS No. 2 AND 4 OF BRIDGE No. 2407

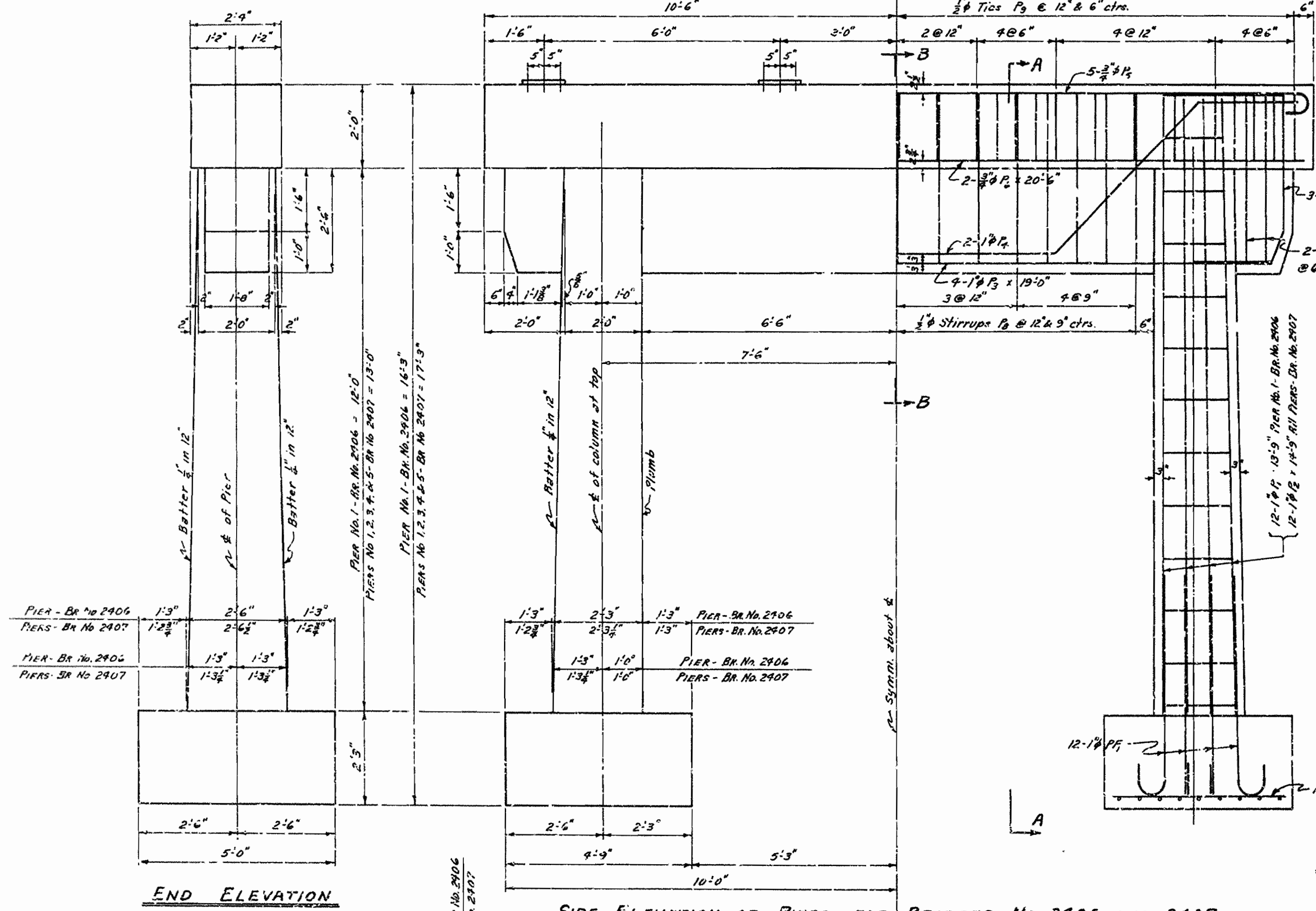


PLAN OF CAP FOR PIERS No. 1, 3 AND 5 OF BRIDGE No. 2407

PLAN OF CAP FOR PIER No. 1 OF BRIDGE No. 2406

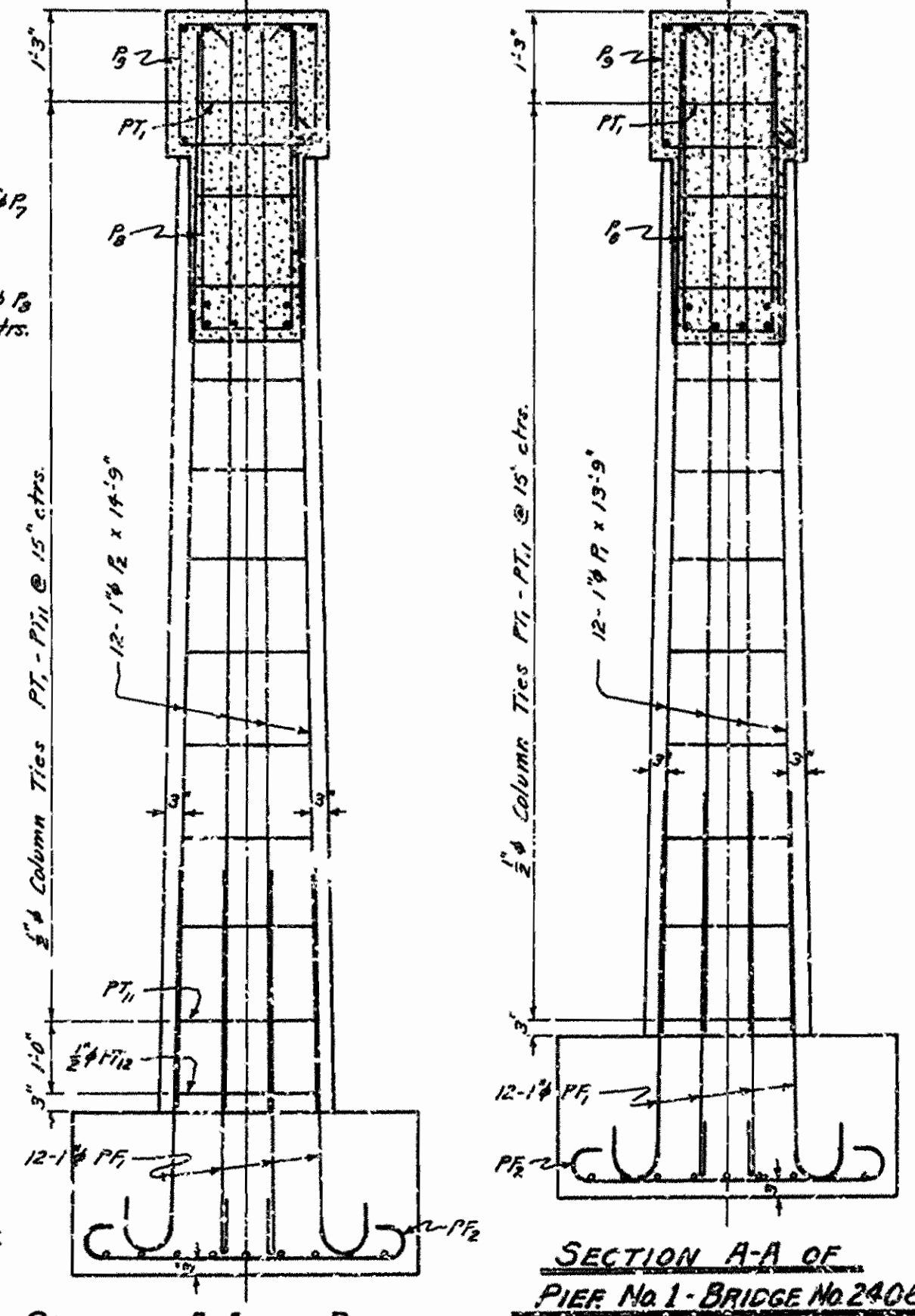


SECTION B-B



END ELEVATION

SIDE ELEVATION OF PIERS FOR BRIDGES No. 2406 AND 2407



SECTION A-A OF PIERS No. 1, 2, 3, 4 & 5 - BRIDGE No. 2407

SECTION A-A OF PIER No. 1 - BRIDGE No. 2406

PIER - BR No. 2406	1'-3"	2'-6"	1'-3"	PIER - BR No. 2406
PIERS - BR No. 2407	1'-2 3/4"	2'-6"	1'-2 3/4"	PIERS - BR No. 2407
PIER - BR No. 2406	1'-3"	1'-3"		PIER - BR No. 2406
PIERS - BR No. 2407	1'-3 3/4"	1'-3"		PIERS - BR No. 2407

BAR LIST FOR PIERS

MARK	SIZE	No. REQS PER PIER		LENGTH	A	B	BENDING DIAGRAM
		BR. No. 2406 PIER No. 1	BR. No. 2407 EACH PIER				
P1	1#	24	24	6'-4"			
P2	1#	24		13'-5"	Straight		
P3	1#	24		14'-9"	Straight		
P4	1#	4	4	3'-0"	Straight		
P5	3#	5	5	22'-0"	20'-6"	0'-6"	
P6	3#	2	2	20'-6"	Straight		
P7	3#	10	10	5'-9"	4'-6"	0'-5"	
P8	3#	10	10	4'-3"	Straight		
P9	3#	6	6	9'-1"			
P10	3#	19	19	10'-5"			
P11	3#	29	29	8'-1"	2'-0"	1'-8"	
P12	3#	2	2	Varies	Varies	Varies	
P13	3#	2	2	7'-2" to 8'-5"	1'-7 1/2" to 2'-1 1/2"	1'-10 1/2"	
P14	3#	2	2	8'-10"	2'-2"	1'-10 1/2"	

NOTE: Dimensions relating to reinforcing steel are to center of bars.

GENERAL NOTES

All concrete to be Class 'A', and shall be poured in the dry. All exposed corners to be chamfered 3" unless otherwise noted.
 For Layout of Bridge No. 2406, see Drawing No. 6552.
 For Layout of Bridge No. 2407, see Drawing No. 6553.
 For details of Two Span Continuous I-Beam Units, see Drawing No. 6556.

QUANTITIES FOR PIERS - EACH

Class 'A' Concrete	BRIDGE No. 2406		BRIDGE No. 2407	
	PIER No. 1	EACH PIER	PIER No. 1	EACH PIER
Reinforcing Steel	19.29 Cu Yds.	19.71 Cu Yds.	24.00 Lbs.	2550 Lbs.

ELEVATION DATA

BRIDGE No.	PIER No.	ELEVATION OF BOTTOM OF FOOTING	ELEVATION OF TOP OF CAP
2406	1	186.08	202.33
2407	1	187.35	209.60
2407	2	187.47	209.72
2407	3	187.60	209.85
2407	4	187.73	209.95
2407	5	187.98	205.10

DETAILS OF PIERS
 BRIDGES OVER NORTH FORK OF SALINE RIVER AND A RELIEF OPENING
 PARON-PERRYVILLE ROAD
 SALINE COUNTY
 ROUTE 9 SEC. 5

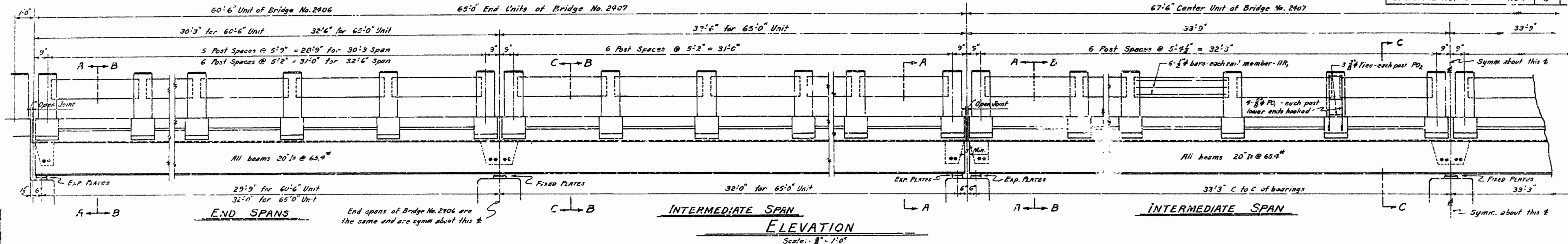
ARKANSAS STATE HIGHWAY COMMISSION
 LITTLE ROCK, ARK.
 Drawn By: W.C.H. Date: 5-16-44
 Traced By: W.C.H. Date: 5-22-44
 Checked By: _____ Date: _____
 BRIDGE No. 2406 & 2407 DRAWING No. 6555

W.C. Haver
 PRINCIPAL HIGHWAY ENGINEER (BRIDGE)

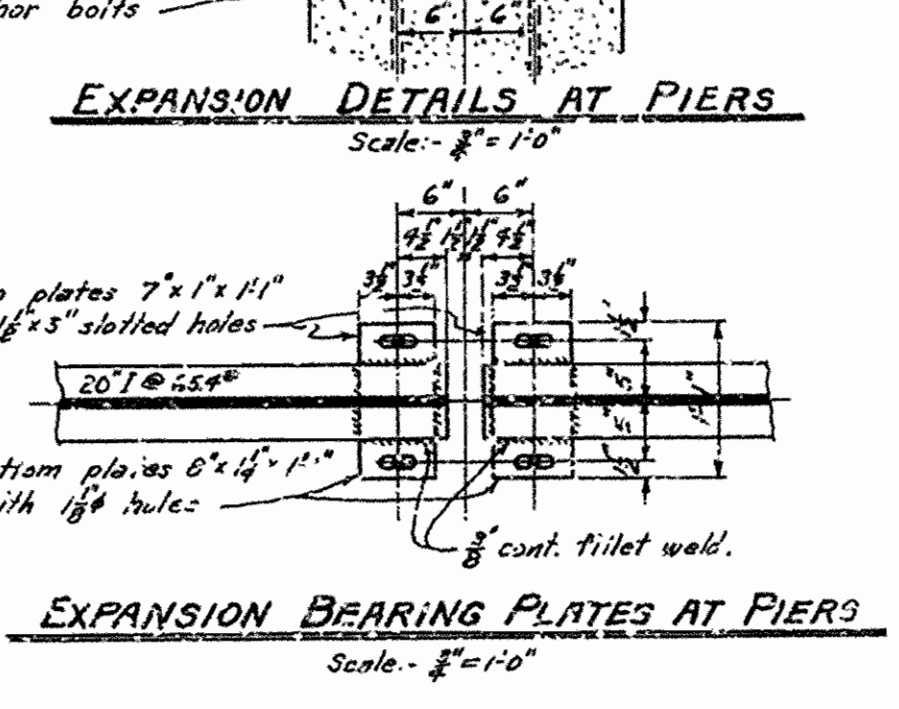
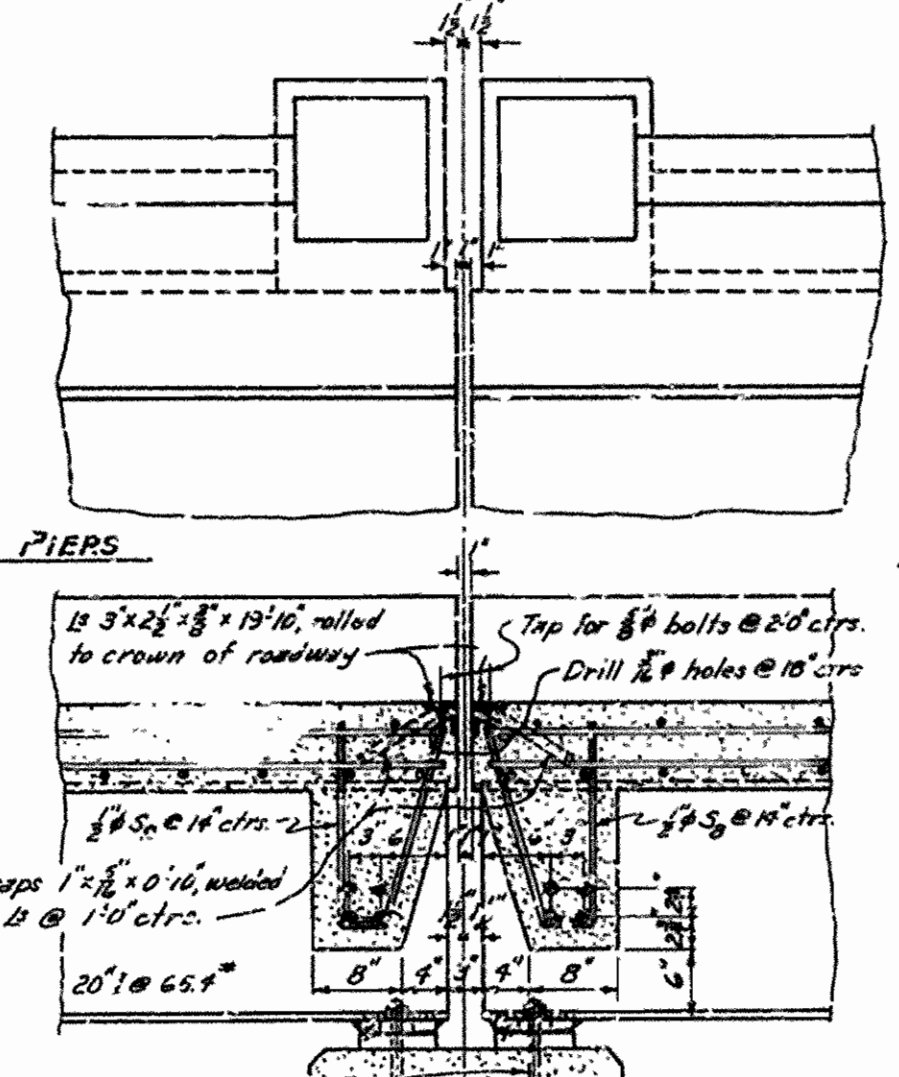
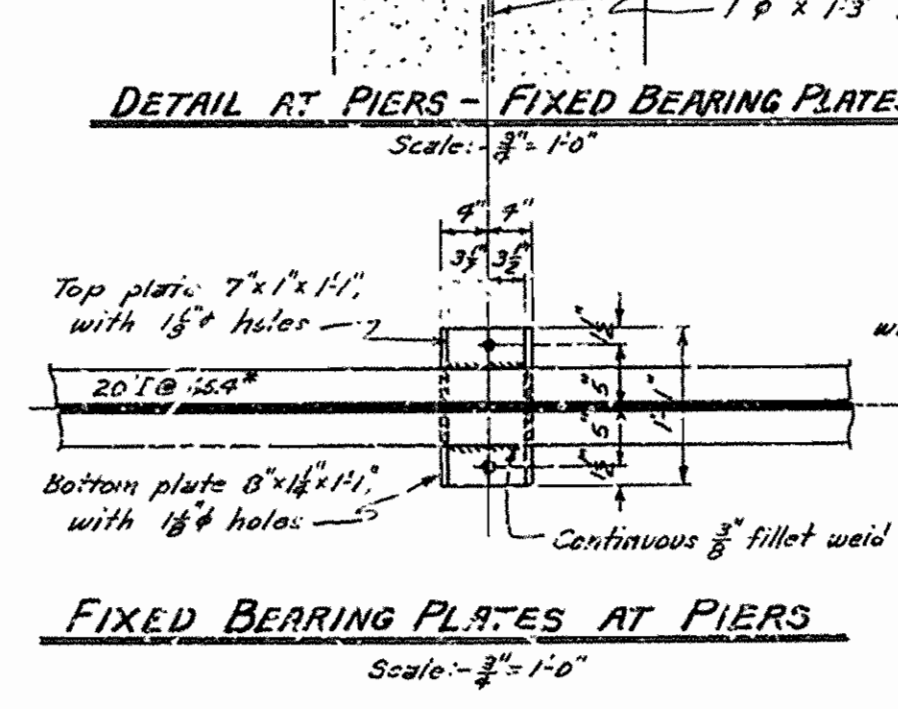
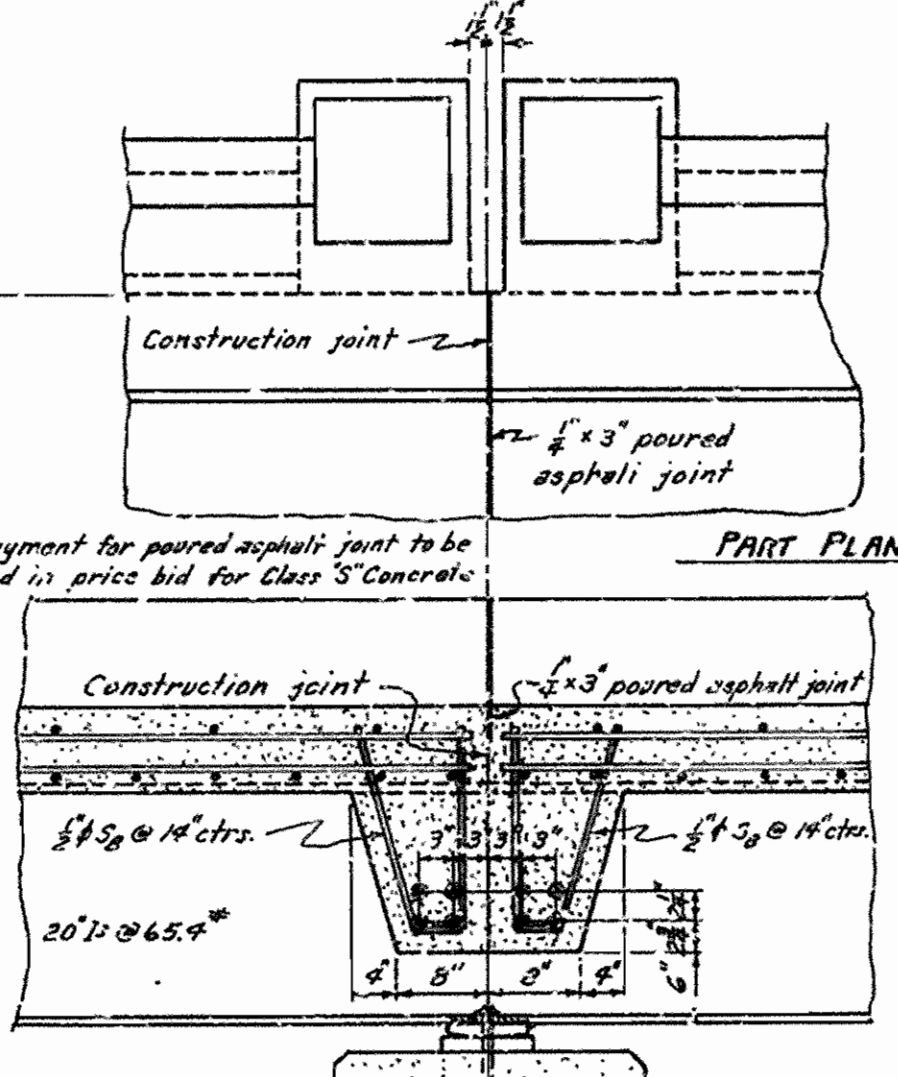
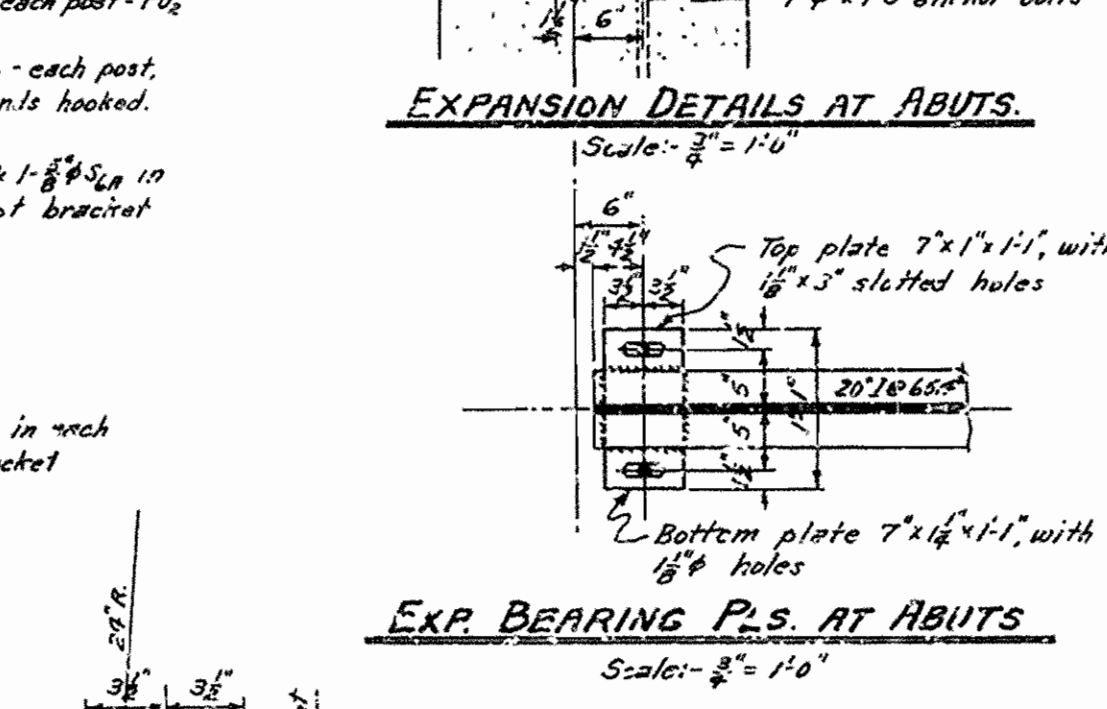
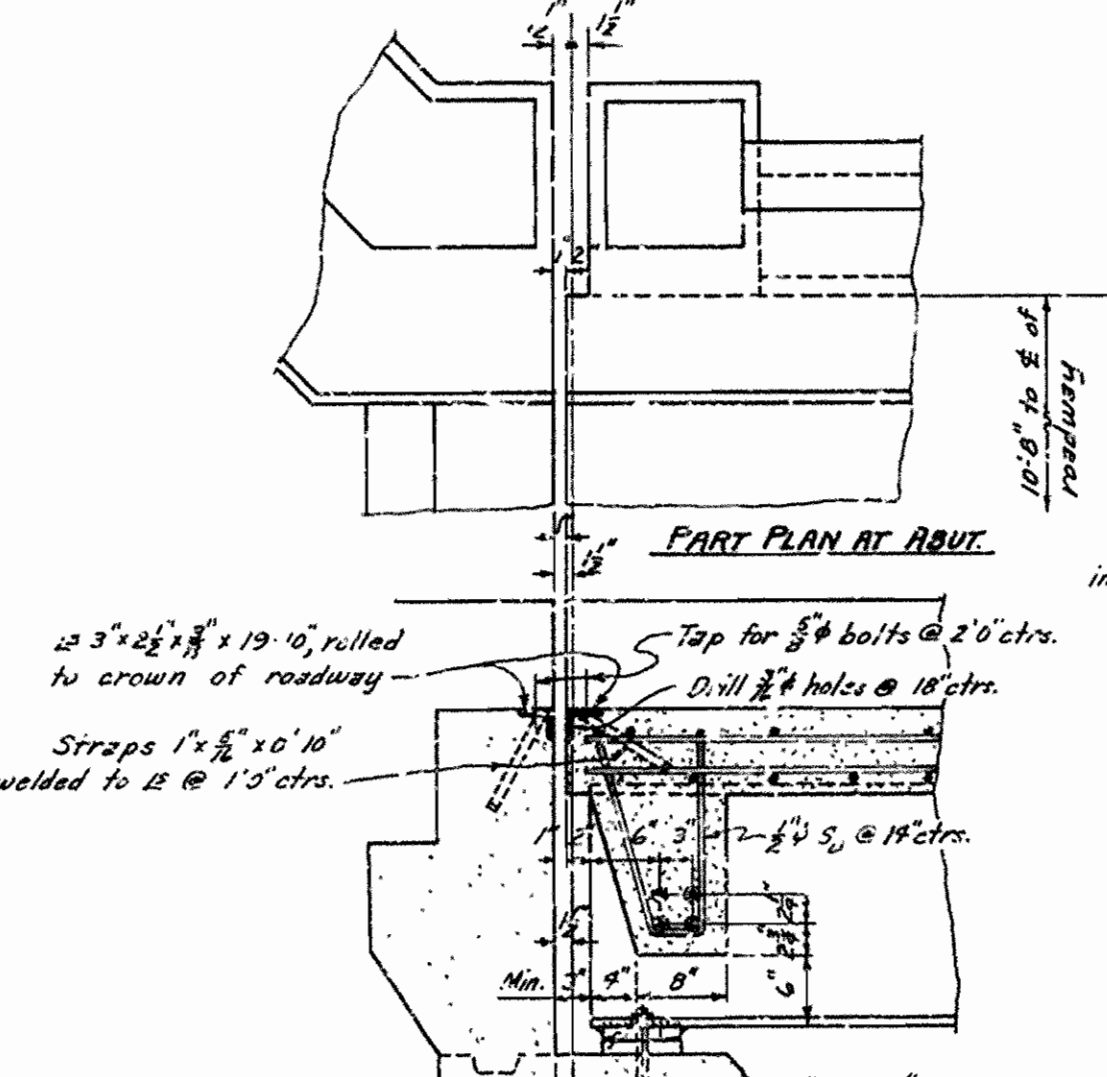
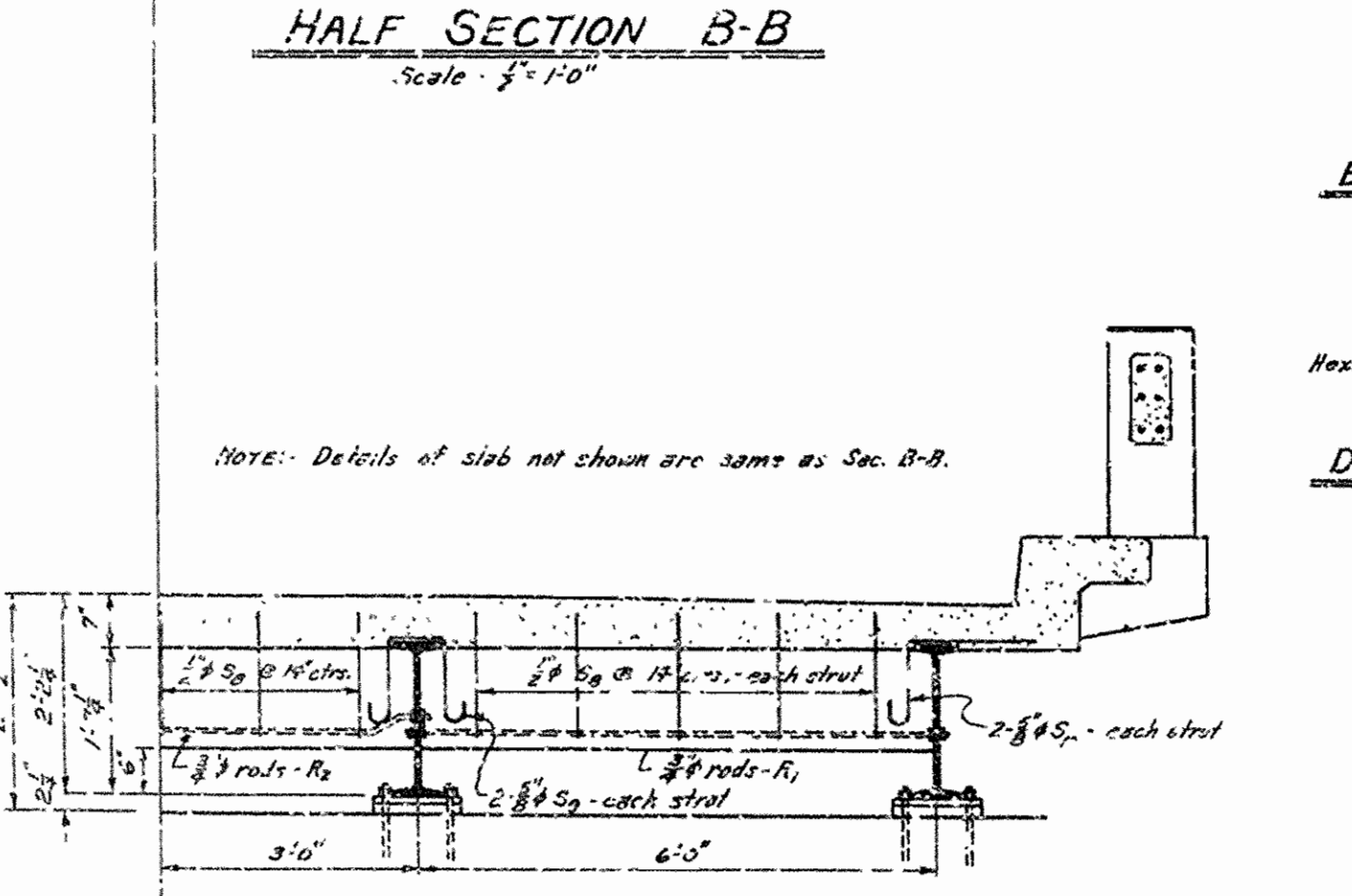
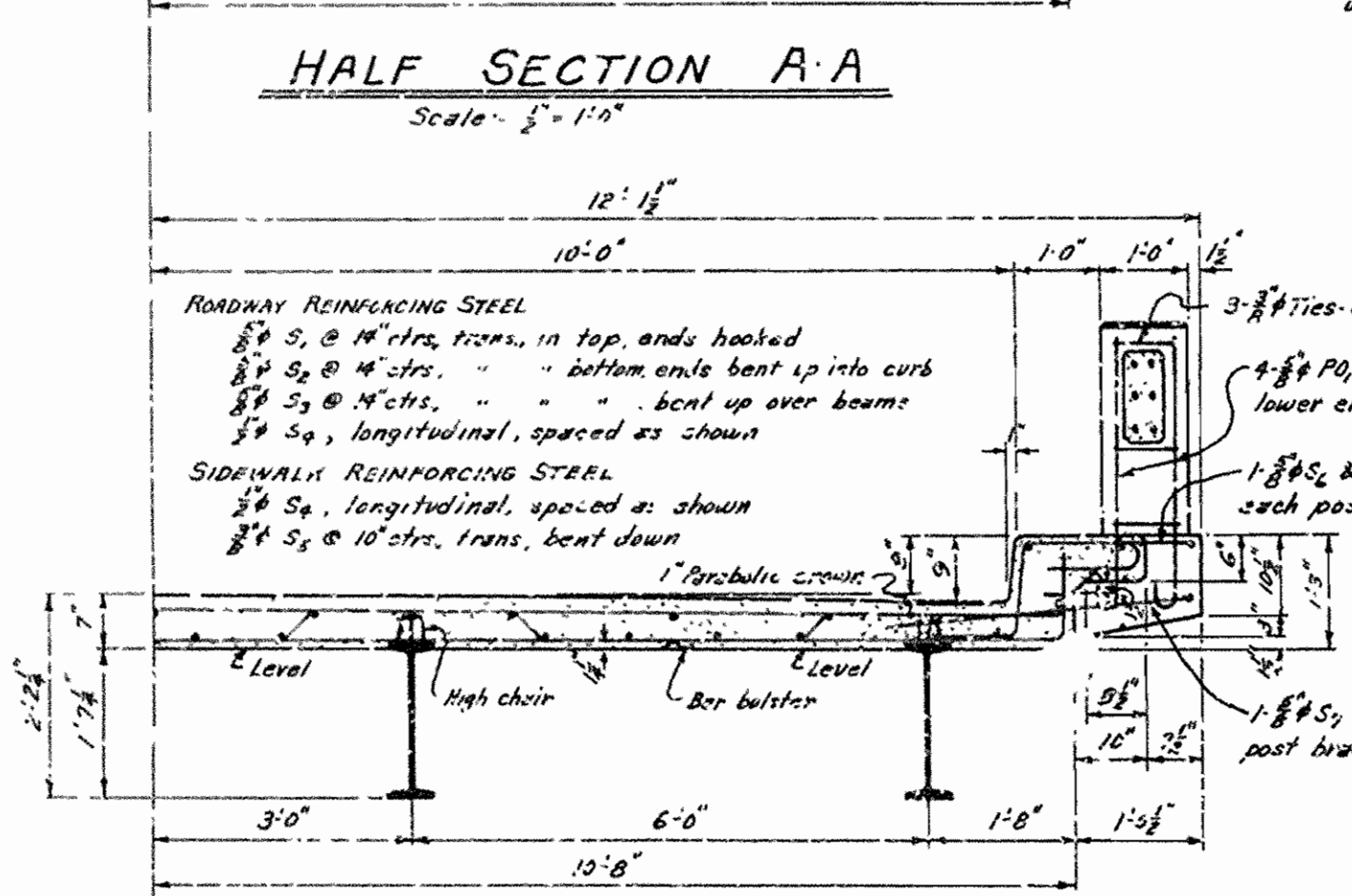
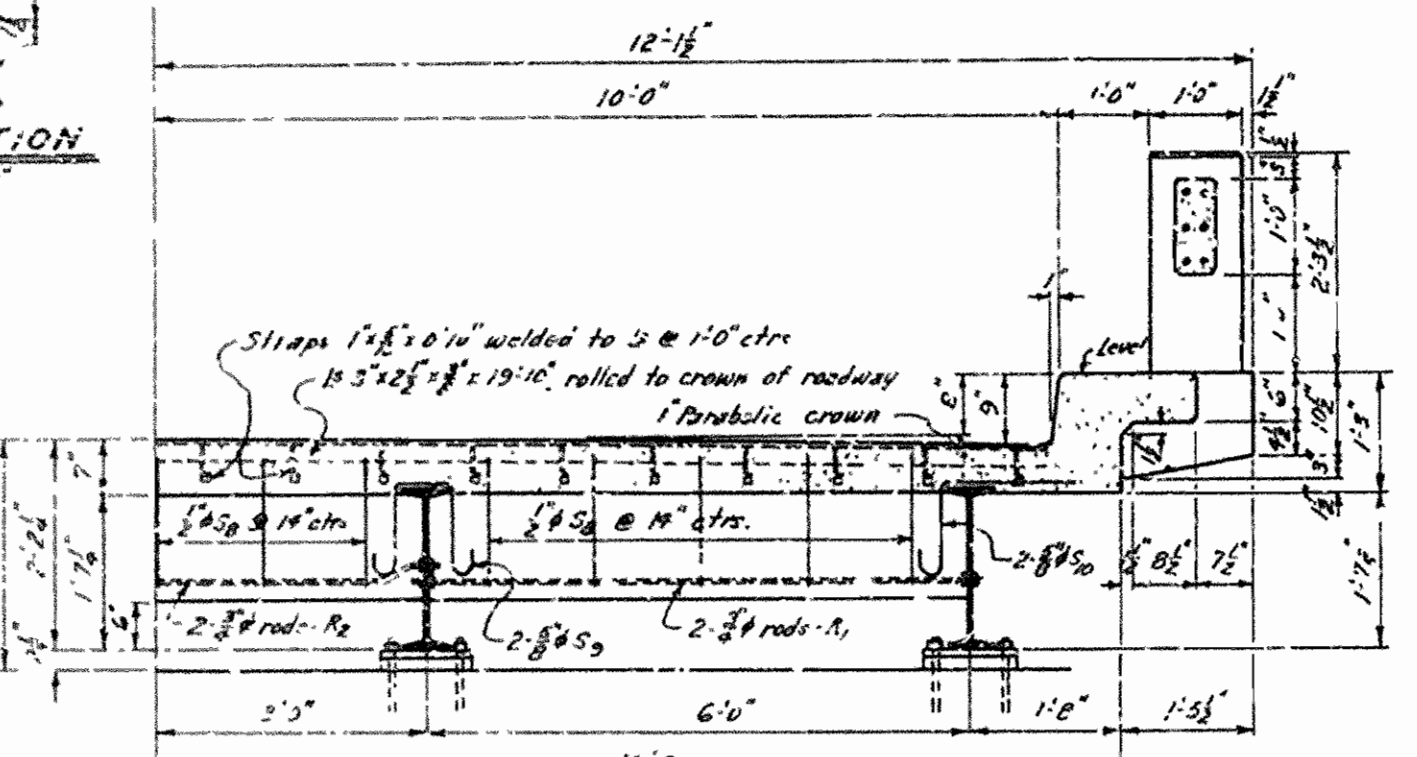
Scale: 1/4" = 1'-0"

FED. ROAD DIST. NO.	STATE	PROJECT NO.	FISCAL YEAR	SHEET NO.	TOTAL SHEETS
6	ARK.		1944	8	10
STATE JOB NO. 6.320					

NOTE: Extend rail members 3/4 into posts. Wrap both ends with 1-ply roofing felt.



RAIL SECTION
Scale: 1" = 1'-0"



GENERAL NOTES

All concrete to be Class 'S'. All exposed corners to be chamfered 3/4" unless otherwise noted.

Open holes 3/4" unless otherwise noted.

All welded shop connections to be 3/8" fillet shop welds, except as noted. Welding to be by the electric arc process.

Reinforcing steel to be deformed bars of structural or intermediate grade. Shop lists and bending diagrams must be submitted and approved before fabrication is begun.

Shop Paint: All new structural steel shall be given one coat of red lead and raw linseed oil before shipment, except surfaces in contact with concrete. All old steel to be spot painted where needed.

Field Paint: 1st coat, white lead. 2nd coat, white lead tinted with lamp black.

Shoes: All bearing plates to be structural steel. All top plates to be shop welded to beams with 3/8" fillet welds extending entire length of all edges and surfaces in contact. Masonry plates to be finally seated on 3 layers of burlap saturated with red lead.

This drawing shows general features of design only. Shop drawings shall be submitted and approved before fabrication is begun.

All reinforcing steel shall be accurately located in the forms and firmly held in place by means of steel wire supports, sufficient in number and size, to adequately prevent displacement during the course of construction and to keep the steel a proper distance from the forms.

Wire supports will not be paid for directly but will be considered subsidiary to the item of "reinforcing steel." Shop lists and diagrams must be submitted for approval.

All beams are on hand and are stored at District No. 4 Shops. Additional structural steel required, are bearing plates, anchor bolts, roadway expansion angles and straps, spacer rods, N, and R₂, and weld metal for welding.

Specifications: Arkansas State Highway Commission Standard Specification for Road and Bridge Construction, adopted March 1, 1940.

DESIGN LIVE LOAD - H-15 LOADING, A.R.S.H.O. 1941

Load distribution to Interior Beams: Dead Load 640#/Lin. Ft.
Live Load 12 Wheels - 0.6 Lanes

Load distribution to Outside Beams: Dead Load 890#/Lin. Ft.
Live Load 0.875 Wheels or 0.4 Lanes

UNIT STRESSES - Class 'S' Concrete (n=10) 1000 #/sq. in.
Reinforcing Steel 18000 #/sq. in.
Structural Steel 18000 #/sq. in.

DETAILS OF TWO SPAN CONTINUOUS I-BEAM UNITS
60'-6" UNIT = 2 SPANS @ 30'-3"
65'-0" UNIT = 2 SPANS @ 32'-6"
67'-6" UNIT = 2 SPANS @ 33'-9"
20'-0" CLEAR ROADWAY
4 GIRDER TYPE

ARKANSAS STATE HIGHWAY COMMISSION
LITTLE ROCK, ARK.

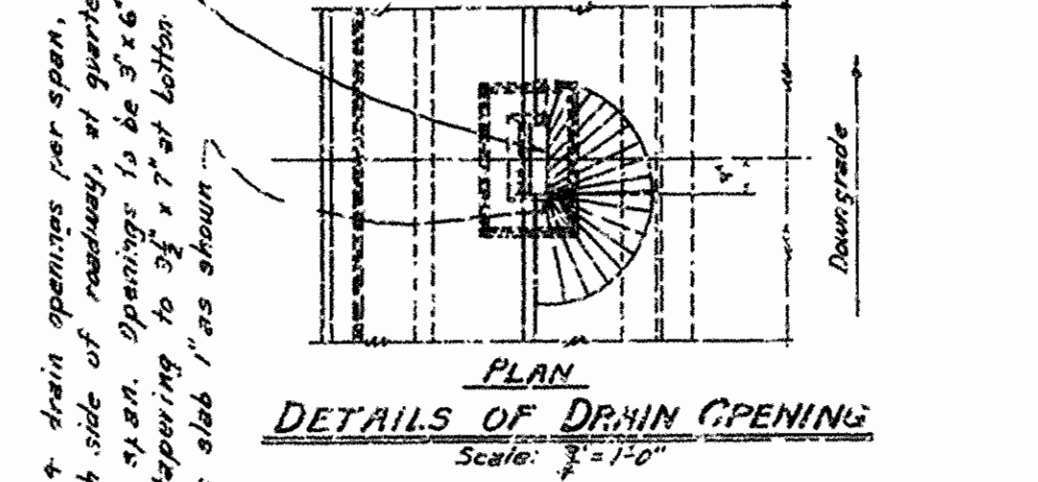
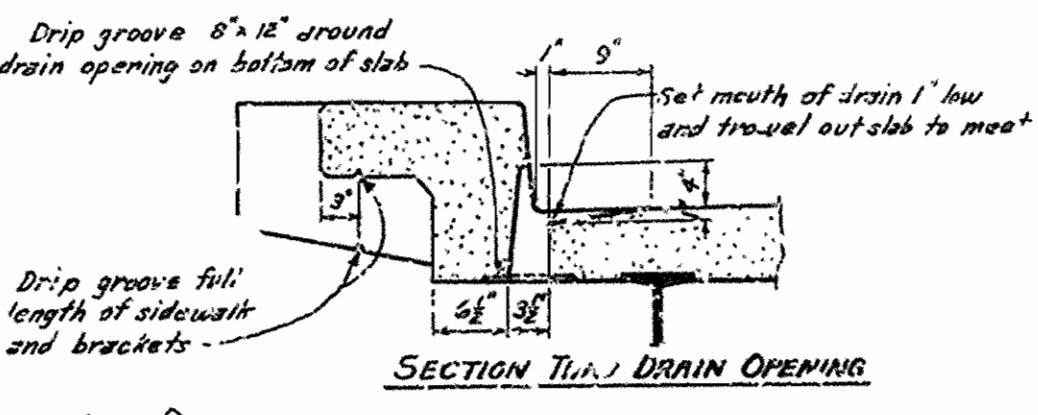
Drawn By: W.C.H. Date: 5-11-44
Traced By: W.C.H. Date: 5-20-44
Checked By: _____ Date: _____

BRIDGES NO. 2406 & 2407 DRAWING NO. 6556

LIST OF BARS FOR EACH UNIT

MARK	SIZE	NO. REQ'D PER UNIT	LENGTH	BENDING DIAGRAM	
S ₁	#5	52	58	21'-9"	[Bending Diagram for S1, S2, S3]
S ₂	#5	52	58	23'-0"	
S ₃	#5	52	58	22'-6"	
S ₄	#5	132	16'-0"	17'-0"	[Bending Diagram for S4-S10, PO1, PO2, NR]
S ₅	#5	198	132	17'-6"	
S ₆	#5	24	28	8'-5"	
S _{6a}	#5	24	28	9'-5"	
S ₇	#5	24	28	8'-0"	
S ₈	#5	60	60	5'-1"	
S ₉	#5	16	16	3'-2"	
S ₁₀	#5	16	16	1"	
PO ₁	#5	96	112	3'-2"	
PO ₂	#5	72	84	3'-7"	
NR	#5	120	144	4'-7"	
				4'-10"	

NOTE: Dimensions relating to reinforcing steel are to center of bars.



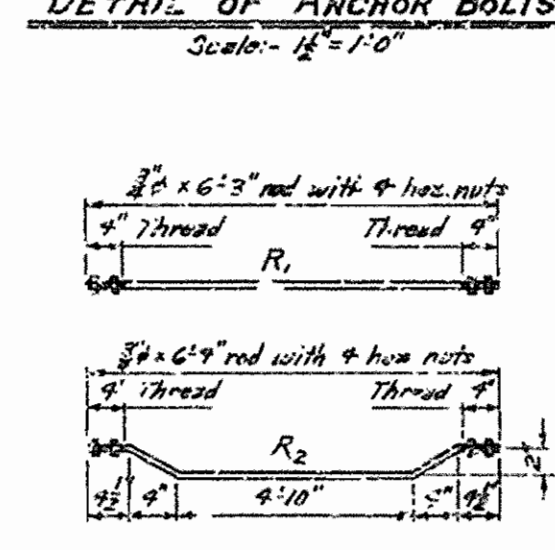
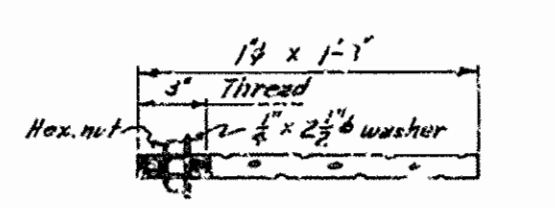
CUMULATIVE QUANTITIES FOR EACH TWO SPAN UNIT

60'-6" UNIT	65'-0" UNIT	67'-6" UNIT
61.64	67.60	71.60
1990	1990	1990
135.0	135.0	135.0
137.0	137.0	137.0
1760.0	1760.0	1760.0
38.97	36.98	35.98
68.30	67.90	67.50
16.50	13.70	13.70
137.0	137.0	137.0
16.990	16.990	16.990

Class 'S' Concrete
Reinforcing Steel
Concrete Paving
Structural Steel - New
Structural Steel - Old

NOTE: Details of slab not shown are same as Sec. B-B.

END VIEW OF ALL TOP PLATES



14 - R₁ rods required per unit
8 - R₂ rods required per unit.